



Ebee (Xiamen) Technology Co., Ltd.

 www.ebee.com

 info@ebee.com

 0086-198-9668-9593

 No. 478, Xinglinwan Road, Jimei District, Xiamen City, Fujian Province, China



WhatsApp



Website

Air Conditioning / Air Source Heat Pump

Water Heating / Boiler Heating / Electric Heating

— Introduction ebee



About Ebee Technology

The HVAC Thermostat Manufacturer

Ebee (Xiamen) Technology Co., Ltd. is a dynamic and creative company in the field of HVAC (heating, ventilation and air conditioning). We have rich experience in thermostat research & develop, manufacturing, quality control, marketing and sales, after-sales services, and received good feedback from a large number of customers from both China and overseas since 2006.

Our products are suitable for water heating, boiler heating, electric heating, central air conditioning system, air source heat pump heating & cooling system.

With the popularity of smart devices, we have upgraded our thermostats and provided smart temperature control solutions. Now, users can adjust the room temperature more conveniently through smart phone APP and voice control, and are not restricted by the location. With the open source of API functions, the ability to customize will be higher.

Ebee Technology owns the ebee® brand, and has more than ten appearance design, electronic hardware design, and application software patents. Our products have passed CE, RoHS, FCC, 3C and other certifications.

Ebee Technology specializes in providing OEM & ODM services to cooperative customers.

► Our Team

We are a young team that is good at exploration and learning. Teamwork, diligence, dedication, pragmatism and innovation are our working principles. We advocate employees to improve themselves, have fun, do well and live a healthy life.

At Ebee Tech, we have excellent team members, a flexible and dynamic working atmosphere, and emphasis on the cooperative relationship among departments. Therefore, our work efficiency is particularly high and it is also highly praised by cooperative companies.

► Our Vision

Focus on technology, understand customer needs, create value for customers, continue to grow and progress, and lead the company to become a first-class HVAC devices supplier and brand with high-quality products and services.

► Quality Concept

Quality wins market!

► Service Concept

Understand the underlying needs and serve customers sincerely.

► Our Core Values

Customers First	Be Honest
Technology-enabled	Be Dedicated
Awe The Market	Good Mentality
Keep Learning	Equal & Respect
Keep Innovating	Teamwork

CONTENTS

■ Introduction

About Ebee Technology	01
-----------------------	----

■ Our Culture

Our Team & Vision / Concepts / Core Values	02
--	----

■ Our Service

HVAC Thermostat Service / OEM & ODM Service	03
---	----

■ Reddot Design Award

	04
--	----

■ Solution

Smart Solution / Third Party Platform / Mobile APP	05
--	----

■ Office & Factory

	06
--	----

■ Products

EB-001WWH / EB-001WBH / EB-001WEH	07
EB-001WAC / EB-001WAS	09

■ Enjoy Your Smart Life

HVAC Thermostat Service

Customer Care

- 24 hours / 7 days, online and offline services



Reliable



Creative



Efficient

PRODUCT R & D

- More than 10 years of experience



High Quality



Stylish Design



Supply Capacity

OEM & ODM Service

- Ebee Technology has obtained CE, Rosh, FCC, WEEE certification. In terms of product R & D, we have also obtained corresponding patents.
- OEM & ODM: structural design, plastic circuit board layout, function & program design
- Service Target: HVAC manufacturer, wholesaler, retailer, system integrator, builder, decorator



reddot design award

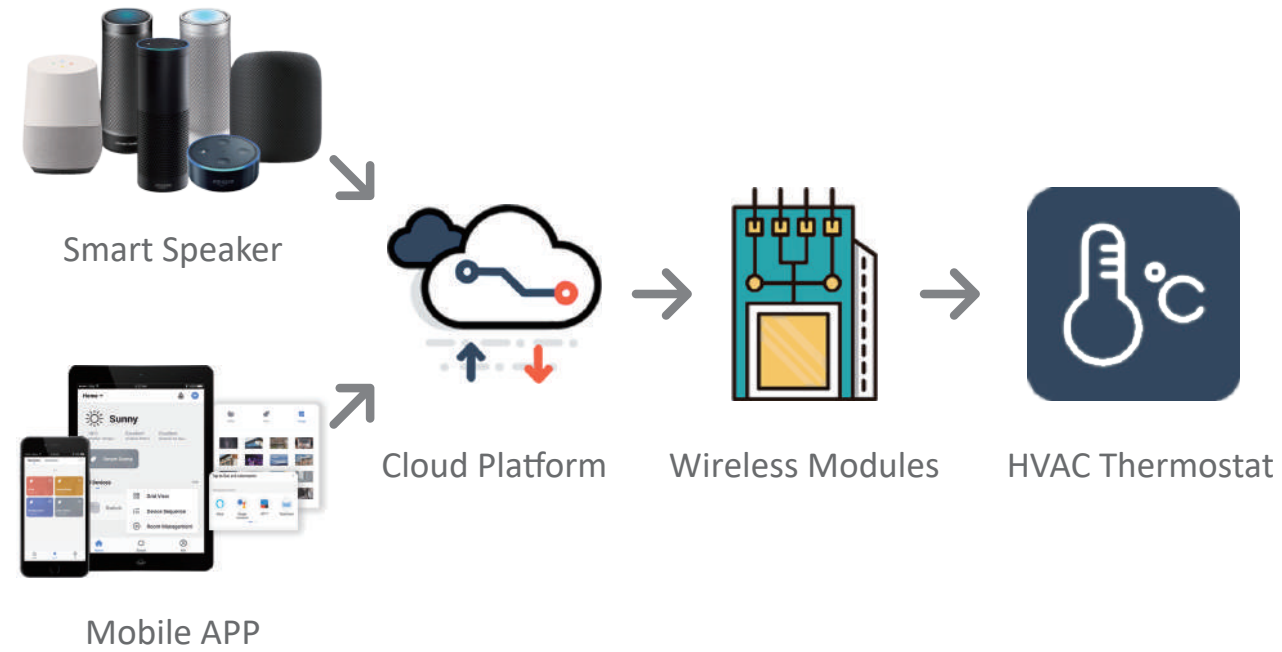
The SMART THERMOSTAT,
has won the **reddot design award** in 2018.

SMART THERMOSTAT is adaptable to all indoor heating and air conditioning control systems. The ultra-thin and beautiful physical profile makes it suitable for all interior styles. Designed differently from traditional thermostat controls, the SMART THERMOSTAT can be controlled via an APP and it works with Amazon Echo, which starts up the heating system in advance to achieve optimal temperature comfort and experience.

Users can also get an energy consumption report from the APP and receive suggestions for energy saving. The user experience design is inspired by the idea of 'piano keys' and hence, the long and slim control buttons.



Smart Solution



Third Party Platform for the Solution



- Deep work with Tuya Smart
- Compatible with Amazon, Google Home, Apple HomeKit, IFTTT, Xiaomi, Rokid, etc.

Mobile APP



Smart Life

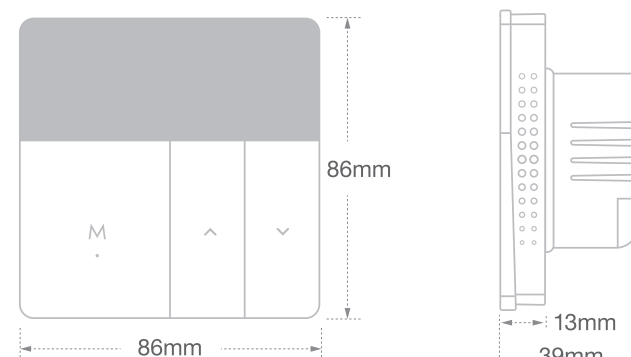
- Search for "Smart Life" in APP Store or Google Play, download and install it, start to enjoy your smart life.

Office & Factory



Manufacturing Processes





Model:

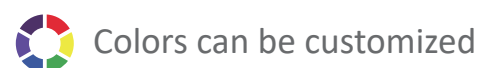
EB-001WWH for Water Heating System

EB-001WBH for Boiler Heating System

EB-001WEH for Electric Heating System



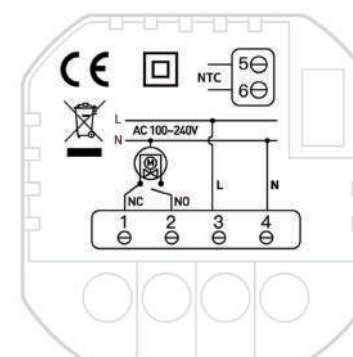
Silver / White



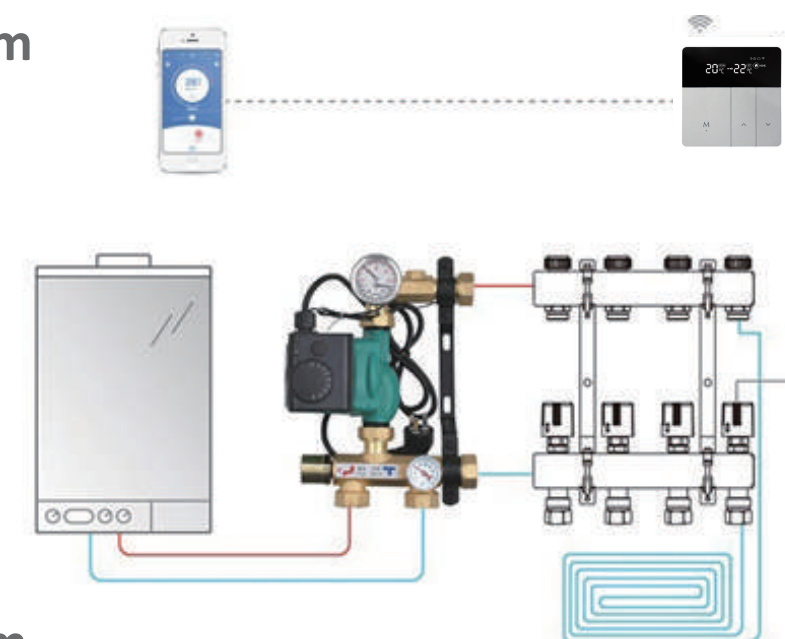
Colors can be customized

- Screen: Negative LCD
- Power: 220VAC/110VAC \pm 10%
- Default temp range: 5°C~35°C(Adjustable)
- Temp Accuracy: \pm 1°C
- Sensor: NTC 10K B:3950
- Dimension: 86*86*13mm
- Output Power: 5A*220VAC(for Water Heating & Boiler Heating)
 \leq 3500W / 16A(for Electric Heating)
- Wireless Protocol: WiFi / Zigbee / RF / RS485
- APP: Android / iOS
- Reddot Design Award

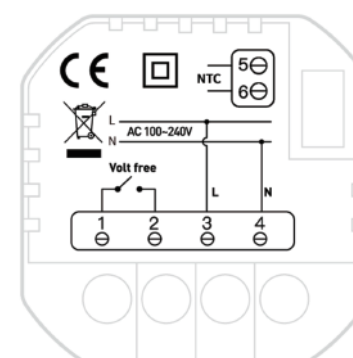
Water Heating System



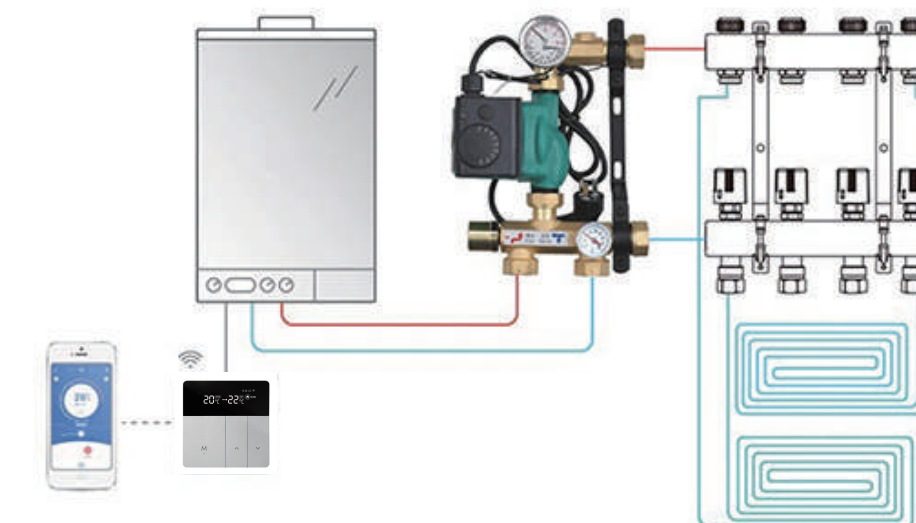
Wiring Diagram



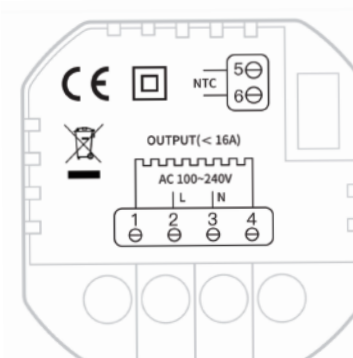
Boiler Heating System



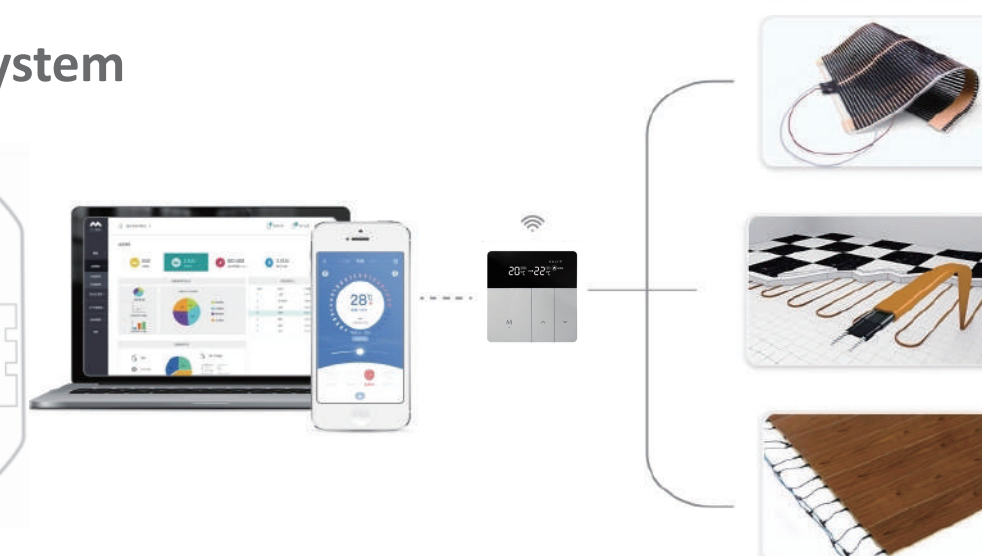
Wiring Diagram

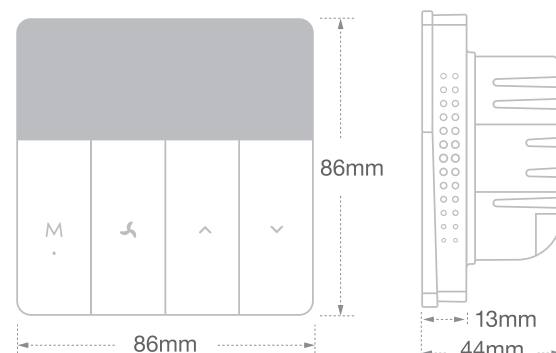
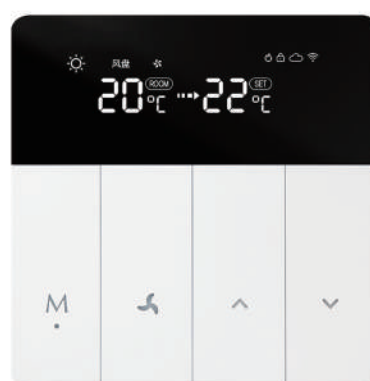


Electric Heating System



Wiring Diagram






Model:

EB-001WAC for Air Conditioning FCU System

EB-001WAS for Air Source Heat Pump System

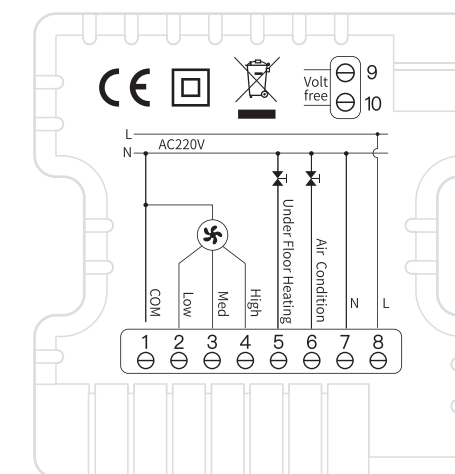
 Silver / White

 Colors can be customized

- Screen: Negative LCD
- Power: 220VAC/110VAC $\pm 10\%$
- Default temp range: 5°C~35°C(Adjustable)
- Temp Accuracy: $\pm 1^\circ\text{C}$
- Sensor: NTC 10K B:3950
- Dimension: 86*86*13mm
- Wireless Protocol: WiFi / Zigbee RF / RS485
- Output Power: 5A*220VAC
- APP: Android / iOS
- Reddot Design Award

Air Conditioning FCU System & Air Source Heat Pump System

- 1: COM
- 2: Low Speed
- 3: Medium Speed
- 4: High Speed
- 5: Underfloor Heating Valve
- 6: Air Conditioning Valve
- 7: N Line
- 8: L Line
- 9 / 10: Dry Contact



Wiring Diagram

