



reddot design award
winner 2018

The smart thermostat
has won the
reddot design award
in 2018



reddot design award
winner 2018

SMART THERMOSTAT

❄️ 🔥 Heat Pump



Air Conditioner &
Underfloor heating

Voice Control

Multi-platform seamless integration, intelligent linkage with Amazon Alexa, Google Home, Tmall Elf and other voice assistants, easy to manage home devices, create an intelligent scene for you, make life easier.

Google Home

amazon echo



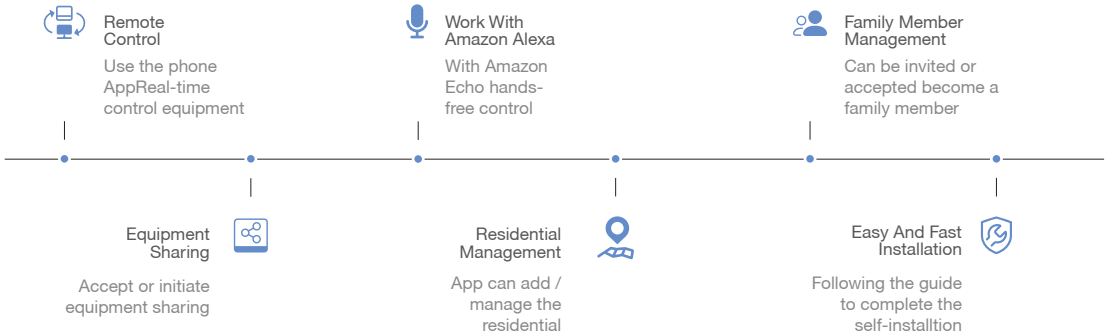
Multiple Operating Modes Smart Control

You can control your products in group, or smart scenes via the App, It's easy to use. Get your location and automation control the device base on the local environment.



Make Your Thermostat More Smart

You can control the thermostat anywhere via the App, you can download the App from Apple Store and Google Play.



Tech-Specs

Color: White / Silver

Screen: LCD

Language: English

Input: 220VAC \pm 10%50/60HZ

Sensor: NTC 10K B:3950

Temp Range: 5~35°C

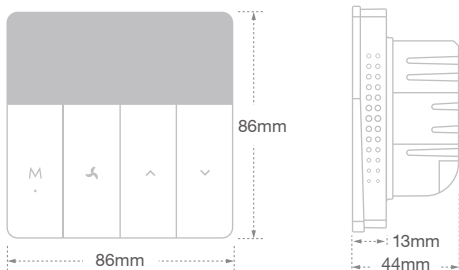
Accuracy: $\pm 1^{\circ}\text{C}$

Size: 86*86*13 mm

Output: 5A/220VAC

Power Cons: ≤ 1.7 KWh/Month

APP: Android / iOS



Screen & Button Functions

地暖+风盘 — Floor +Fan Heating

地暖 — Floor Heating

风盘 — Fan Heating

— Cooling

— Speed

High Medium Low

a Current Temperature

b Target Temperature

c From left to right: Loading, Lock, Cloud Connection, WiFi Connection

Press 'M': Switch heating or cooling

Press 'M' 3s: Power on or off

Press '🌀': Switch the speed



Press '↑': Increase the temperature

Press '↓': Decrease the temperature

Press '↓' 3s: Enter WiFi pairingmode

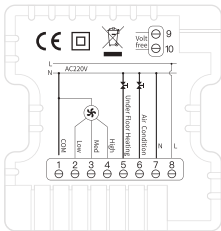
Connect To The Internet

- Press “√” for 3s, “📶” will flash quickly
- App enter the add device page, select the type of product.
- Input the SSID and password, then pairing.



Wiring Diagram

- | | |
|-------------------------------|-----------------------------|
| • 1: COM | • 6: Air Conditioning Valve |
| • 2: Low Speed | • 7: N line |
| • 3: Medium Speed | • 8: L line |
| • 4: High Speed | • 9/10: Dry Contact |
| • 5: Underfloor Heating Valve | |



Installation Manual

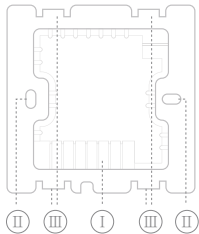
- Environment:**
Install in a 86*86 box which is installed in the wall. Powered by 220V AC .
- Safety:**
Before installation, please confirm the power supply has been cut off .



86 box

Installation Steps

- Connect each wiring;
- Connect the steel to the 86 box;
- Buckle up the power box and panel.



Other Operations & Warning

a. Lock & Unlock:

Long press the 'M' and 'v' to lock or unlock.

b. ERR Exception:

When the 'Er' light up, it means the sensor mode was wrong or the sensor was broken. And the temp value in the screen will show '--'.

c. There have the Valve Anti-lock Function:

When the thermostat is at 'Inner Sensor' mode and the valve without any operation keep in 120 hours, auto-open the valve, then close after 3 minutes.



TIP:

In order to improve product quality and experience, the product may be upgraded from time to time. If this instruction is not indicated in time, Thank you for your kind understanding

Advanced Settings

Long press '^' and 'v' (3s) enter the advanced setting, press '↩' to switch setting items; Press '^' or 'v' to change the setting value; Press 'M' or without any operation in 10s, will confirm the current setting and return to main menu; Press '^' or 'v' to select:

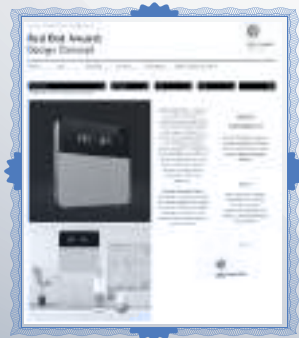
- 1 Return difference value: Default 3°C
- 2 Sensor type
00: Internal 01: External 02: Internal & External. Default is 00
- 3 The fan switch
Whether close the fan while the room temp is reach to set temp
0: No 1: Yes Default is 1 (Only use in Cooling mode)
- 4 Swing: 1-9 °C, Default 2 °C
- 5 Temperature calibration: -9°C~+9°C, Default is 0°C
- 6 Highest target temperature: 35~90°C, Default is 35°C
- 7 Lowest target temperature: 0~30 °C, Default is 5°C
- 8 System reboot:
When the screen shows 'RE', press 'M' to confirm.
- 9 Factory setting:
When the screen showed 'DF', press 'M' to confirm.

Honor



**reddot design award
winner 2018**

The smart thermostat,
has won the
'reddot design award '
in 2018.



Smart Thermostat Adapts To Any Indoor Heating And Cooling Systems,
Provides Energy Reports And Has A Sleek And Beautiful Aesthetic.

Patent

The smart thermostat have several patents and pass the SGS testing,
including ROHS/CE /WEEE .

